

# ORANGE5

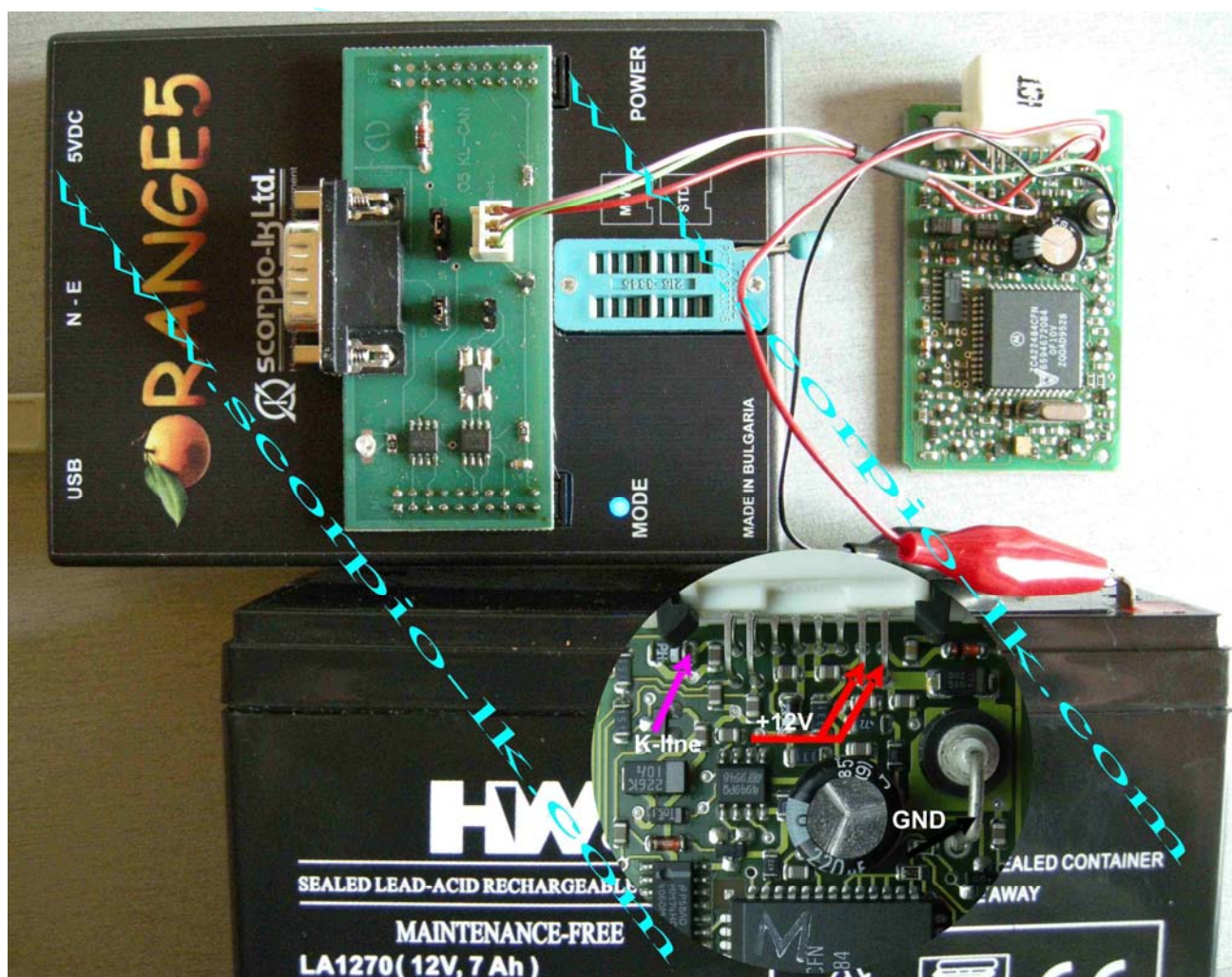
## NATS-2

The module for programmer Orange-5(O5) allows work with immobilizers for Nissan NATS-2 using processors Motorola - 5WK4593, 5WK4640, 5WK46472, 5WK4825, 5WK48642.

**Never attempt to run this application on a car using OBDII plug.** This application is able to act only with dismantled immobilizer.

### BASIC MODE

This mode intended for quick keys making.



### How to make a key.

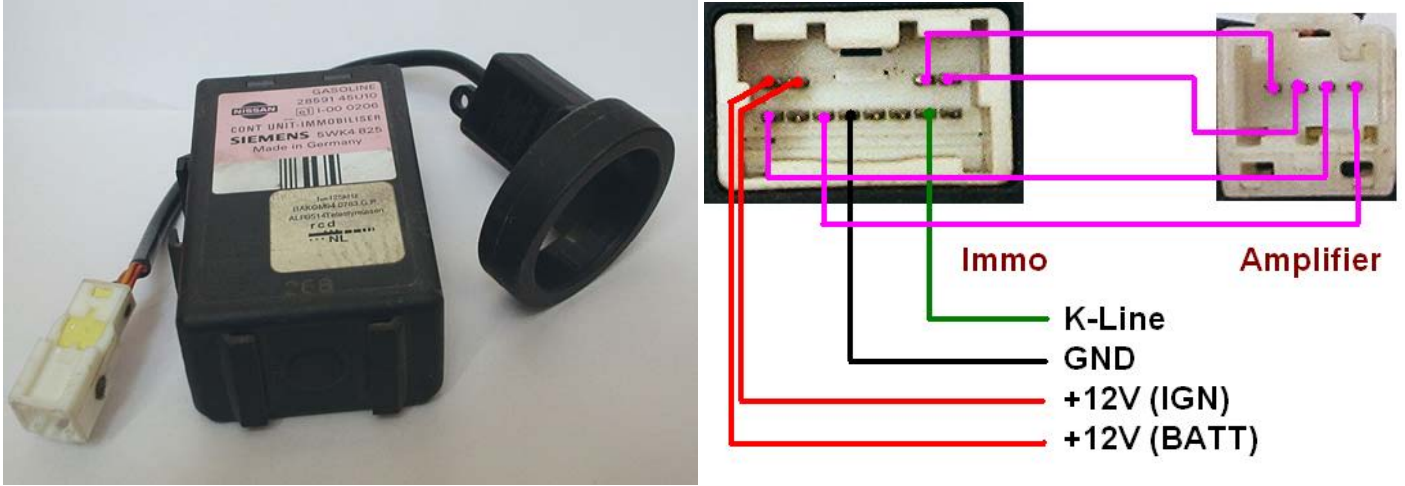
1. Assemble the device as shown on the picture above.
2. Supply an external power to the immobilizer +12V as shown above
3. Run Orange.exe
4. Click the "Select Type" and choose "O5 immo"
5. In the left window select "Nissan"
6. In the right window choose NATS-2
7. Click the "R" (Read) button.
8. **After success reading save the dump.**
9. Apply the saved dump on Tango to make a key.

## ADVANCED MODE

This mode provides access to EEPROM, RAM, ROM . Additionally there is a possibility to erase and automatically add new keys.

Reading, writing and modification of the EEPROM is done in an usual way.

It's strongly suggested to begin the work by reading and saving an EEPROM dump. Only after that, continue as needed. The EEPROM dump contains synchronization code with the engine ECU and if its content is damaged, immobilizer will not unblock the ECU.



### Review of the module additional features.

“Immo Version” – will provide immobilizer software version.

“Add Key” – registers new keys to the system (maximum of four). When initiating this function the system will go in mode for registering keys, even if at that moment there is no key in the amplifier’s coil. After that put the immo and the amplifier inside the car , insert a new key and turn on -> off ignition. When the system is started with a previously prepared key the system will turn off the automatic registration of the key. If it is needed to do this procedure in lab conditions i.e. out of the car when u change the keys in the antenna the button “Add Key” has to be pressed. Also like when it is inside the car when this function is selected with a previously registered key the automatic registration of keys cancels.

“Delete All Key” – will delete all the key information from the EEPROM. If some of the keys previously registered in the system need to be reused, “Add Key” procedure must be executed after erasing all the key information from the EEPROM.